

# THE MOONRAKER



# SWINDON TOWN

SPONSORED BY:



BARCLAYS LEAGUE DIVISION TWO

**CRYSTAL PALACE**

SUNDAY 27th MARCH 1988

KICK OFF 3.00 p.m.

OFFICIAL  
PROGRAMME  
**60 PENCE**

TODAY'S  
MATCH SPONSORS

MR. A. HOLLAND  
HIGH CLOSE  
SOFT FRUIT  
HUNGERFORD



# THE SKY'S THE LIMIT



## Lowndes Lambert Group Limited

*sponsors of Swindon Town F.C.*

Providing insurance protection for  
industry and commerce across the  
world.

Aspen House,  
Temple Street,  
Swindon  
Tel: 26252

## Hill House Hammond Limited

*A member of the Lowndes Lambert Group*

One of the UK's largest brokers for  
motor, household and personal  
insurance, with branches nationwide.

128/129 Commercial Road  
Swindon  
Tel: 618158



# THE MOONRAKER



# Down THE LINE

## SWINDON TOWN FOOTBALL CO. LTD.

Telephone (0793) 642984 (5 lines)

Registered Office:  
COUNTY GROUND, SWINDON

**President:**

MR. W. J. CASTLE

**Chairman:**

B. HILLIER

**Vice Chairman:**

G. W. HERBERT

**Directors:**

D. ALDERTON

N. ARKELL

C. J. GREEN

C. HOWARD

T. J. KEARSEY

R. MATTICK

L. SMART

**Administration Manager/Club Secretary:**

D. G. KING

**Manager:**

LOU MACARI

**Assistant Manager:**

JOHN TROLLOPE

**Coaches:**

ANDY ROWLAND

CHIC BATES

**Accountant/Company Secretary:**

V. F. FARRAR

**Commercial Manager:**

DOUG BUSWELL

**Club Medical Officer:**

DR. J. NICHOLAS

**Club Physiotherapist:**

KEVIN MORRIS

**Club Chaplain:**

REV. NIGEL SANDS

**Programme Editor:**

DAVE KING

**Design:**

EDDY SHUREY

**Typesetting:**

T.S. TYPESETTING

**Artwork:**

ROBERT BROWN

**Printing:**

THAMESDOWN LITHO

All contributions published in this programme do not necessarily reflect the view of Swindon Town Football Club.

### HONOURS

Division 3 Promotion	
Play-Off Winners:	1986/87
Division Four Champions:	1985/86
Football League Cup	
Winners:	1969
Semi-Finalists:	1980
Anglo Italian	
Cup Winners:	1970
International League Cup	
Winners Cup:	
Winners:	1969
Division Three Runners Up:	1962-63, 1968-69
F.A. Charity Shield Finalists:	1911
F.A. Youth Cup Finalists:	1964
F.A. Cup Semi-Finalists:	1910, 1912



**Good afternoon and welcome to the County Ground for what should be an absorbing match with Crystal Palace. I would like to thank the Selhurst Park Club for their co-operation in agreeing to meet us in a Sunday afternoon fixture.**

This 'Barclay' League fixture was originally scheduled for yesterday but with the help on the South London Club we were able to experiment with our first Sunday afternoon fixture of this season.

**May I extend a warm welcome to the Directors, Officials, Players and Supporters of Crystal Palace to the County Ground today.**

I am sure that **Fraser Digby** our England Under-21 International goalkeeper will recall our visit to Selhurst Park earlier this season. It was in our October fixture that Fraser sustained a broken thumb. Fate was not on our side that autumn afternoon because we lost the game to a controversial penalty decision.

Recalling that afternoon gives me the opportunity to congratulate both **Fraser Digby** and **Jimmy Quinn** on their recent call-up to the England and Northern Ireland International squads. These selections are not only an honour for the players but also to the Club.

The enforced changes that were brought about by injury when we met Barnsley in our last home match did not deter eleven players meeting the needs demanded of them. Everyone I spoke to was full of praise for the way they responded to the challenge.

Following this afternoon's match we have two more home matches during this forthcoming week when we entertain **Bradford City** on Wednesday evening, kick-off 7.45 and again next Saturday afternoon when **Leicester City** visit the County Ground.

We were unfortunate in having our original fixture with Bradford City abandoned on January 16th when fog descended on the County Ground.

Few of you who travelled to Filbert Street on Saturday November 7th will forget the last seven minutes of play. Despite the fact that we were reduced to ten men due to Steve Foley's dismissal, we were seemingly coasting to maximum points with a comfortable 2-0 lead. If ever the lesson was clearly defined that a match is never won until it is sometimes lost, it was emphasised that day at Leicester. The final whistle blew and we were beaten 3-2.

A few scores to settle over the next seven days, will our team respond to the challenge? You will all know the answer in the next seven days by coming to the County Ground.

Enjoy today's match it may have a lot of bearing on the end of season play-off situation.

# THE MOONRAKER



## OUR SPONSORS '87-'88

Ball Sponsor	Match Sponsor	Opponents	Date
Calne Town Football Club	Mr. Siebberg Brunel Scaffolding	Bristol City	18.8.87
C.H. Baxter and Sons	Burmah-Control (UK) Limited	Sheffield Utd	22.8.87
Mr. G. Williams	Merrill Engineering Swindon	Hull City	31.8.87
The Ring Cafe Coverdale Square	Clarton Shepi (UK) Ltd	Birmingham City	12.9.87
Thamesdown Computer Services	Heywood Insurance Brokers	Portsmouth	22.9.87
Cricklelade Rd. Swindon	Melksham		
Spillers Furnishing	Transplant Ltd.	Reading	26.9.87
Swindon 22329			
Simon McLaven	F. Green and Son	Shrewsbury Town	29.9.87
A Shrewsbury Exile	Coal Merchant Lambourn		
Wiltshire Holloway Benefit Society, Market Street	Plumb Centre	Oldham	10.10.87
Trowbridge 1022 14 3005	Techno Trading Estate Swindon		
Roy Warren and Family	Skurays	Stoke City	26.10.87
of Lambourn	Drove Road, Swindon		
South Marston Hotel and Country Club	Bennetts Insurance Brokers	Warrington	28.10.87
	Commercial Road, Swindon		
Antony Howell	Watsons (Swindon) Ltd	Manchester City	31.10.87
	Wholesale Newsagents, Swindon		
The Blunsdon House Hotel	Crosby Dogs	Plymouth Argyle	14.11.87
	Groundwell Estate, Swindon		
Wills Wholesale Electrical Co. Ltd. Swindon 616067	Kennedy of Swindon	A.F.C. Bournemouth	28.11.87
	A. Harman and Son Cheneoster Travis and Arnold P.L.C.		
Mr. A. Dome	B.A.S.F. Coolings and Iako Tenco Industries	Huddersfield Town	1.12.87
Mr. & Mrs. Webb	Signal Engineering	Derby County	23.12.87
Lyndard Millicut	Signal Way, Swindon		
Cliff Jones	Allied Dumas	Ipswich Town	28.12.87
Westox Aluminium	Brothers Petroleum Fairfield		
Waymo Moore and Family	Arkella Brewery	W.B.A. Norwich City	11.88
Harmond Construction Ltd. Swindon 766112	The Oxford and Swindon Co-Operative Society Ltd		9.1.88
Our friends from	Clarton Shepi (UK)	Chelsea	19.1.88
The Disabled Enclosure			
Mr. Ron Franklin	Toxaco Ltd., Swindon	Middlesbrough	6.2.88
The Rat Trap			
Stratton St. Margaret			
Jefferys DIY Highworth	Strallors (UK) Ltd	Norwich	23.2.88
De Laxe Car Hire Swindon 644996	Action Plant Ltd	Millwall	27.2.88
The Pete Allen Jazz Band Swindon 851948	McLeans (South West) Ltd	Barnsley	15.3.88
Mr. M. Puffett	Mr. A. Holland	Crytal Palace	27.3.88
European, Swindon	High Close Soft Fruit Hungerford		
John Tremlin	Roy Allen Supplies	Bradford City	30.3.88
Coped Hill Service Station	Woolsea, Swindon		
Mr. Raynor	The Post House Hotel Swindon	Luton City	2.4.88
Uni Mill Engineering, Swindon			
In memory of Mr. R. Williams	Mr. C. Puffett	Blackburn Rovers	9.4.88
A life long supporter	Multi App Quarries	Leeds United	30.4.88
Emery Orr McLaven	Avoncluse Autocare	Aston Villa	7.5.88
	Transplant Ltd		

### KIT SPONSORS

Shirt	Boots	Track Suit	Training Shoes	Shorts Socks
Levi Maczari	Swindon Supporters in London Association Nick Cooke 01 368 9651 Paul Donkerley 21 720 3466	Track Suits	Boots Socks	
Steve Barber	Richard Gibbons Precision Sheet Metal Work, Swindon 791377, 793086	Non-Spones 100 Footcaine Road Swindon	Mr. Ernest Ulyds Bank Devizes	The Brennan Family Trow Way Wootton Bassett
Leith Barnard	Forshaw and Lewis Street, London House Residential House			
Bobby Barnes	Mr. Bridges 99 Wynton Road Swindon	R. Conpton Contaminated Welding Putnam 770743	David Bone 49 Paradise Road Swindon	Jeffries 21V 34 High Street Highworth
Peter Coyne	Bobby Swinton Royal Oak Pressworcester Swindon 25813	Mr. Gibson 31 Ash Walk Wootton Bassett	Mr. Fawcett 90 Horseshoe Walk Wootton Bassett	Chris Scott
Colin Caulfieldwood	Stev Rogers Sports Wear 1000 West Endbury Surrey	T. Savage K. March Two well representations Swindon	Refugee out of Town	Refugee out of Town
Peter Dighty	Scott Glover Paul Wills	The Brown Family F. C. and C. Co. Swindon	Steven Hillier	Robert Brown and Sons Swindon 2612
Steve Foley	K. P. Chubb 10 Ash Walk Wootton Bassett	Richard Herbert	M. Jackson 13 Maple Road Wootton Bassett	Summitts Berryman Trow Way Wootton Bassett
John Givens	Cliff Jones Women's Aluminium Hydramora Estate Swindon			
Charles Henry	The Brennan Family 31 Trow Way Wootton Bassett	Sharon Hill F. 24035	Mr. Tim Bennett Adam Bennett	Tim Bennett Wholesale Meat Swindon
Dave Hockaday	The South Family 1000 West Endbury Surrey	Ben Herbert	Mr. Hancock Parkway 1000 West Endbury Surrey	Mr. Colin Atkinson The District Hubway
Nick Hurreard	Cliff Jones Women's Aluminium Hydramora Estate Swindon			
Paul Isbell				
Phil King	Boyer School of Motor Engineering Swindon 1080 3062	John Ward 40 Bolton Place London N1 8EQ	Avoncluse Avery Swindon	
Chris Kinnear	Therese Capell Hill Service Station	Robertson of Town	Maxwell and Newbury	
Alan McLoughlin	Mr. B. Hillier 40 Dorset Close North Pole Kent			
Kenneth O'Brien	Yates Shop 348 Cricklade Road Swindon	The County Ground Swindon	Unit 1, Ash Hill Swindon 611047	Ann Enderby Swindon 611047
Pete Parker	The Cheekers of Swindon	The Peter Allen Ltd Swindon	Mr. Bird Kingston Jersey Chipperton	Chris Scott
Henry Quinn	D. Jones C. Jackson B. Wier M. Scott J. Gerrard			
Steve White				
Ernie Wade	Gordon Gibson 33 Dalway Swindon	Mr. Mansell 64 Beechwood Rd Swindon	Russ Sherrin 100107 Melksham Road Swindon	John Plimpton Mrs. Steve Wade Melksham
John Tredgole				
Andy Howard	Andrews Health The Old Vauxhall Kempland	The Old Vauxhall High Wycombe	Mr. Maurice Datin	T.S. Townsend Unit 22, Chisney Mains Swindon 610687
Kevin Moran	Barnes Swindon 101 Swindon Road Swindon			Chris Parker Roy Trow Hotel Swindon

# THE MOONRAKER



# LOUIS

WAY • WAY • WAY

**I would like to open my lines for this column by praising the players who have lifted themselves from the disappointment of the Luton Town result. They have responded in magnificent manner by defeating Barnsley 3-0 and then obtaining a point from a 1-1 draw at Maine Road, against Manchester City.**

I cannot comment on the matches, because I missed both matches due to scouting trips. It is a credit to my backroom staff that I am able to miss matches in the knowledge that the good work is carried on by John Trollope, Andy Rowland and 'Chic' Bates, who are all capable men in their own right and this is important if any football Club wants to be successful.

With the transfer deadline due to fall on Thursday last, it is impossible for me to tell you at the time of writing these lines whether I will be involved. It is a strange time, with prices often inflated and yet every manager wants to ensure that he is able to consolidate a promotion challenge or avoid a relegation scare. Another factor has been added in the last year with the play-off system. Fifth position can be so important with this new system and so can being third from the bottom of the table.

How pleasing it was to know that in the absence of first team regulars such as Colin Calderwood, Dave Bamber, Steve Foley, Jon Gittens and Chris Kamara, that their replacements rose manfully to the task to perform adequately in their places. Competition is good for all concerned.

The next seven days will determine how close we can become to being involved in the play-offs. With Crystal Palace, our visitors today, and Bradford City both visiting the County Ground. We can gain points



on these Clubs who are both well placed in the Second Division. Our visitors next Saturday, Leicester City, are now beginning to take shape under the guidance of David Pleat. We will be hard pushed to collect all nine points. That must be the target, we have leeway to make up and it would give us a tremendous boost and fillip before we face the Blackburn Rovers, Leeds United and Aston Villa's.

It sounds a gigantic task but that is the measure of progress we are making in believing that Swindon Town can match these type of Clubs.

**I would like to welcome my former Old Trafford team-mate Steve Coppell to the County Ground this afternoon.** Steve was one of the

most honest professionals I had the pleasure of playing alongside. His absence from the England squad when he was forced to quit his playing career left a void and long lasting problem for England. Since then he has shown that his quiet unobtrusive manner has been well suited to the job of management and I think he will eventually lead Crystal Palace back into the First Division.

Today it is our task to make that job a little more difficult and thereby gain compensation for our controversial defeat at Selhurst Park last October. I still have nightmares recalling that controversial penalty decision that robbed us of a merited point. Let's hope fortune favours us a little more this afternoon than it did that day.

Enjoy the match and don't forget it's back to the County Ground on **Wednesday evening** to see **Bradford City, kick-off 7.45 p.m.** Fog permitting! Keep smiling.

*John Mason*

**Four wheel drive – Two wheel drive – One wheel drive – Hill House Hammond have the right policy.**

**GO  
BUY  
BURMAH  
PETROL**



# THE MOONRAKER



## Wiltshire Premier Shield ...

We meet **Chippenham Town** in the **Wiltshire Premier Shield Final** on **Thursday 7th April 1988** at **Melksham Town F.C.** The kick-off for this match will be **7.30 p.m.**

For those of you who like to keep records of the Town teams in all competitions, we reached the Final by defeating **Westbury United** on **February 22nd 1988** by **8-1** at **Trowbridge Town F.C.**

The Town were represented by: **Hammond, Merriman, Marshall, McLoughlin, Henry, Casserly, Barnard, Simpson, Wade, White, Viveash. Substitute: Hunt.**

The Town goalscorers were **White (3), Wade (2), Barnard and Casserly.** The referee was **Mr. P. D. Hardy.**

.....

## A. N. Other ...

The Board of Directors have given permission for **Wiltshire Football Association** to use the **County Ground** for two cup finals on **Sunday 8th May 1988.** The kick-off for those two matches will be at **2.00 p.m.** and **3.45 p.m.**

These two matches will be the final matches of the season at the County Ground.

Work on the County Ground surface is due to commence on the following day in preparation for the **1988/89** season.

.....

## Football Combination ...

We have re-arranged our outstanding fixture with **Portsmouth** for next **Thursday, March 31st.** The kick-off will be **2.00 p.m.** at the **County Ground.**

.....

## Goalscoring Substitutes ...

When **Charlie Henry** scored our third goal at Oldham Athletic on March 12th he became the **third** substitute to score this season in League matches for the Town. Although our replacements have actually scored four goals. **Steve White** scored twice against **West Bromwich Albion** at the **County Ground.** The other goal was scored by **Jimmy Quinn** from the penalty spot at **Millwall.**

In cup matches **Steve White** scored when he took the field as substitute against

**Portsmouth** in the **Littlewoods Cup** at Fratton Park.

.....

## Football League Demands

Due to their agreement with the Home Associations the Football League ordered us to re-arrange our away fixtures with Hull City and Blackburn Rovers so that our **Northern Ireland International** striker **Jimmy Quinn** would be available for their forthcoming matches with **Poland** and **Russia.**

With the players due to take a break abroad during the two week break following our home fixture with Blackburn Rovers on April 9th our options were limited for dates.

While Lou was willing to play without Jim in our team, the Football League were adamant that other Clubs could state that there was an unfair advantage to be gained by teams involved in promotion or relegation issues.

The new dates for these fixtures are: **Tuesday April 12th, Hull City, away, kick-off 7.45 p.m. Monday April 25th, Blackburn Rovers, away, kick-off 7.30 p.m.**

THE TOWN  
AROUND

Hill House Hammond –  
lower rates for lady drivers.

# THE MOONRAKER



County Ground

MOON

## WEDNESDAY

### Wednesday March 9th

An air of disappointment surrounds the County Ground following the previous evenings Simod Cup Semi-Final defeat at Luton.

Our 'Sunday Mirror' Football Combination team draw 1-1 with Crystal Palace in a match played on the ground of Tooting and Mitcham. Charlie Henry gave the Town a first half lead but Palace hit back to equalise shortly after the interval.

Lou travels to Reading to watch the Reserve team match between the Elm Park Club and Chelsea, his interest lies in Chelsea's South African born winger Roy Wegerlie. Along with coach 'Chic' Bates, Lou then travels on to London to watch the First Division fixture between Tottenham Hotspur and Everton. Lou had hoped to meet John Hollins at White Hart Lane but the beleaguered Stamford Bridge Manager fails to put in an appearance.

## THURSDAY

### Thursday March 10th

Lou has transfer talks with Chelsea Chairman Ken Bates regarding Roy Wegerlie but the London Club are more interested in player exchange deals than cash transactions. Their proposals include two Town players, one of those is an entirely unsatisfactory proposition. Talks continue regarding a player exchange deal.

## FRIDAY

### Friday March 11th

Any transfer talks with Chelsea are shelved as the Town squad set out for Manchester in preparation for the League fixture at Oldham Athletic tomorrow. In preparing for this game Lou takes the Town party to Manchester United's indoor training centre which contains an Astroturf three quarter length pitch.

Chris Kamara is informed that he will be required to attend Shrewsbury Magistrates Court in April regarding the after the match incident at Gay Meadow on February 20th.

## SATURDAY

### Saturday March 12th

Another plastic pitch disappointment for the Town! With the squad depleted by injuries to Dave Bamber and Colin Calderwood, they tumble to a 4-3 defeat against Oldham Athletic. It is the Town's third successive League defeat. Included in the Town goalscorers is new signing Paul Bodin who scores on his League debut for the Club. Meanwhile Jimmy Quinn notches his twenty-fifth League goal of the season and Charlie Henry scores his first League goal of the season when he takes the field as an 83rd minute substitute. Jon Gittens is the Town's third Captain of the season following Colin Calderwood and Dave Bamber.

The Town's 'Abbey National' Building Society sponsored South East Counties League team draw 2-2 with visiting Tottenham Hotspur at Lydiard Park. Paul Hunt and trialist Nick Pollard are the Town goalscorers.

Your dogs bark can take a bite out of your Household Insurance costs.



# THE MOONRAKER



• **Jon Gittens** – the Town's third Captain of the season.

## SUNDAY

### Sunday March 13th

Jon Gittens joins Colin Calderwood and Dave Bamber on the Town's injury list. All three are considered doubtful for the League match with Barnsley this forthcoming Tuesday.

## MONDAY

### Monday March 14th

Chris Kamara is included in the Town's Reserve team to face Millwall at the Den. Bobby Barnes is the Town goalscorer in the 3-1 defeat.

The Football League order the Town's two League matches at Hull City and Blackburn Rovers to be re-arranged on new dates. Northern Ireland's selection of Jimmy Quinn and Wales selection of Hull City's Tony Norman are the reason for the Hull City re-arrangement.

The Football League fear a series of complaints from other promotion contenders if the Ewood Park fixture went ahead without Jimmy Quinn in the Town line-up. Although Town boss Lou Macari was prepared to play both fixtures with-

out the Northern Ireland striker. The Blackburn away fixture is moved forward one day to Monday April 25th. It is difficult to conceive that a player will have his mind fully on both fixtures, both matches, the League fixture and the International take place within the space of forty-eight hours!

With the Town due to take a seven day break abroad, the Hull City date is still in obedience. The Football League want the fixture to be played on Tuesday April 12th but Lou would prefer the match to be played on the Monday with the Town players due to fly from Gatwick on the Wednesday morning.

## TUESDAY

### Tuesday March 15th

A depleted Town team overcome the odds to defeat Barnsley 3-0 at the County Ground.

A match which had required three pitch inspections before it was given the thumbs up sign from referee Philip Don saw regulars Colin Calderwood, Steve Foley, Dave Bamber, Jon Gittens and Chris Kamara missing from the line-up.



• **Jimmy Quinn** who took his total of goals for the season to twenty-six.

Northern Ireland striker Jimmy Quinn took his total of goals to twenty-six for the season with a first half penalty. Two second half goals by Steve White gave the Town one of their most comfortable wins of the season. It was a match that Town boss Lou Macari gave a miss as he covered the Southampton and Chelsea Football Combination fixture at the Dell to take another look at Chelsea's Roy Wegerlie.

## WEDNESDAY

### Wednesday March 16th

The Town's England Under-21 International goalkeeper Fraser Digby is named in the England Under-21 squad to face Scotland at Nottingham Forest next week. It is the Second Leg of the Quarter Final of UEFA under-21 Championship. Fraser did not make the England team for the First Leg so he will be hoping for better fortune for the Second Leg fixture.

The 7,558 who watched the Barnsley fixture the previous evening was the lowest attendance of the season for a League fixture at the County Ground. Recently published figures showing that Swindon now had a population of somewhere in the region of 220,000 and with an anticipated fifty per cent of the attendance coming from outlying areas it meant that only 1.8% of the population of Swindon came to the game. An amazing statistic considering the achievements of the past two seasons.

Lou travels to nearby Oxford to watch United's Football Combination fixture with Watford. The Vicarage Road Club fielding virtually their first team run out comfortable 4-0 winners.

**WATCHDOG – Household Insurance with a discount for Dog Owners. Tel: Swindon 618158**

# BAMPTONS



SWINDON

STRATTON ROAD,  
SWINDON,  
WILTSHIRE.

TEL: (0793) 35547/8/9

## MOTOR VEHICLE ACCIDENT REPAIR SPECIALISTS

*Approved by Major Insurance Companies*



Motor  
Agents Association

APPROVED

**PORSCHE**

BODY REPAIRER

## STOP THIEF!

**Problems with Security • Fire •  
Safety? Come to the store  
in the Brunel Centre for –**



Safes – Free Standing.

Safes – Wall Mounted.

Safes – Floor.

Safes – Document.

Fire Extinguishers – Industrial.

Fire Extinguishers – Commercial.

Fire Extinguishers – Motor Car.

Fire Extinguishers – Household.

Fire Blankets.

Smoke Detectors.

Emergency Lights.

Cash Boxes.

Deed Boxes.

Cash Carrying Cases.

Mortice Locks.

Mortice Deadlocks.

Padlocks.

Yale Locks.

Combination Locks.

Keys.

Key Cutting – all types.

Key Boxes and Keeps.

Door Locks.

Safety Bolts.

Window Locks.

Patio Door Locks.

Dry Batteries.

Rechargeable Batteries.

Door Chains.

Door Viewers.

Door Entry Systems – Mechanical.

Door Entry Systems – Electrical.

Door Entry Systems – TV.

Burglar Alarms.

Motor Vehicle Alarms.

Face Visors.

Safety Helmets.

Safety Goggles.

Heavy Duty Rechargeable Torches.

Household Torches.

Nursery Alarms.

Safety Tools – Electrical.

Fire Signs.

Safety Signs.

First Aid Boxes.

Eye Wash Dispensers.

**24 hour emergency service**

## SECURITY & FIRE CENTRE

1 LOWER ARCADE, BRUNEL CENTRE, SWINDON. TELEPHONE 20627

# THE MOONRAKER



# Junior



# ROBINS



Nationwide Anglia

## TODAYS MASCOT



Name ..... Sean Amor  
 Address ..... 38 Wheeler Avenue  
 Swindon  
 Age ..... 10 years  
 School ..... Ruskin Junior  
 Plays for ..... Stratton Red Eagles  
 Position ..... Midfield  
 Favourite Player .....  
 Fraser Digby  
 Favourite Other Player .....  
 Colin Calderwood  
 Favourite Other Team .....  
 Tottenham Hotspur

videos featured well during the journey with a 'splattering' of Faulty Towers and Jasper Carrott and of course that ageless video of a certain night at Selhurst Park.

Arriving at the Hough End Sports Centre in Manchester, we were greeted by the vast area of pitches looking more like mini duck ponds. However after donning flippers and snorkels all players were given 'life jackets' in case of difficulties when attempting 'diving' headers. The result however didn't matter as we all enjoyed ourselves, as our hosts afforded us with warm and sporting hospitality. After our aquatic excursions, lunch followed with the Man of the Match awards and presentations, and finally the short journey to Maine Road.

The afternoon's match is now history to all of those who attended, with the final comment that the 'whole of the ball must cross the line.'

Here's looking forward to next seasons travel.

Birthday greetings go to Samantha Davies of Dorcan who was 13 on the 24th. Clint Cooper who will be 14 tomorrow, Michael Rivelt of Eldene who will be 9 on Tuesday. We have three birthday boys on Wednesday: James Queenan of St. Joseph's, Damian Cook of Hreed Parkway and Perminder Johal of Churchfields. They will be fifteen, fourteen and thirteen respectively. Last but not least J. Riley of Westlea who will be ten on Thursday.

Today we extend a warm welcome to our guests and near neighbours the Junior 'Eagles' from Crystal Palace. They have brought a coach party of junior members and parents for todays match.

This morning their young Eagles U/13s football team played their first match against our 'Transplant' sponsored Robins, having just reformed after years of absense. This has coincided with the opening this season of their new Family Sponsored Enclosure at Selhurst Park. We hope they enjoy their day out with us, as part of the ever increasing exchange visits between Junior Supporters Clubs.

We look forward to the day when we are able to proudly offer Junior and Family facilities (new South Stand) as in the case of many of our counterparts: may that day be sooner rather than later.

Saturday March 19th again saw the Junior Robins on their travels, this time to Maine Road. Leaving the County Ground at the unearthly time of 6.15 a.m., we enjoyed the comfort of our own 'executive' style travel. Needless to say football

**Motorcyclists – keen rates for your mean machine!**

**Hill House Hammond Insurance Brokers.**

**Tel: Swindon 618158**

# THE MOONRAKER

## PROFILE • PROFILE • PROF



### LOWNDES LAMBERT ARE THE SWINDON TOWN SPONSORS

When the Robins travelled to Selhurst Park for our 2nd Division fixture there last October, connoisseurs of the history of both Clubs were delighted to discover in the match programme a superb vintage photograph of an incident from a game between the Palace and Swindon from before the last World War.

Some details were provided, and in response to a request for further information Palace enthusiasts Ian Weller and David Keats replied.

So – now it's our turn! We've reproduced the photo again, and we are sure that the game took place at the old Cup Final ground at the Crystal Palace on September 16th 1911. The result was 2-2 and the picture shows the Palace captain **Harry Hanger** heading towards our goal which is guarded by **Len Skiller**. The great **Harold Fleming** of Swindon and England is seen immediately to the left of the Palace skipper, while Palace fans have identified **Jimmy Hughes**, their centre half behind the bunch of three players, but enthusiastic historians of both Clubs would like to know who the other Swindon defenders are.

Any information or ideas should please be sent to our Clubs honorary chaplain (Rev. Nigel Sands, Wickham Rectory, Newbury, Berks. RG16

## Vintage Palace v Swindon

### ... part 2!

8HD) who is kindly correlating this effort between the Clubs, and we'll report any additional information provided in a later programme.

• • • • •



### TEAMS:

**Crystal Palace:** Johnson, Collyer, Bulcock, Collins, Hughes, Hanger, Garratt, Hewitt, Harker, Woodhouse, Myers.

**Swindon Town:** Skiller, Kay, Tout, Handley, Bannister, Silto, Jefferson, Fleming, Wheatcroft, Bown, Lamb.

**Referee:** Lieut. W. C. Clover

**Attendance:** 8,000

Bown put Swindon Town ahead just before half-time but at the interval Palace shuffled their inside forward trio and as a result scored twice in a minute, early in the second half.

Harker certainly scored first with the second credited in some reports to Hewitt and in others to Woodhouse.

Bown equalised for the visitors as the match drew towards its conclusion.

### RETIRED?

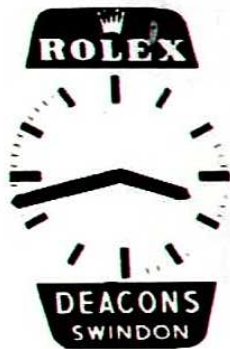
Save up to 30% on your Household Insurance with our special policy. Hill House Hammond Tel: 618158

# DEACONS

Established 1848

11-13 Wood Street, Old Town, Swindon

Telephone Swindon 22072 · 27530



**YOUR TIME  
IS  
OUR GOAL**

Supply and repair of watches, stop watches and timing equipment our speciality.

All work guaranteed

Free Estimates

ACCESS Accepted



**Branch Offices:**

128 High Street, Wootton Bassett. Tel. 2945

32 High Street, Highworth. Tel. 762548

18 Market Place, Faringdon. Tel. 2114

# Hulford

## Motors Ltd.

SELF DRIVE HIRE SPECIALISTS  
FOR OVER 30 YEARS



**CAR &  
VAN HIRE**

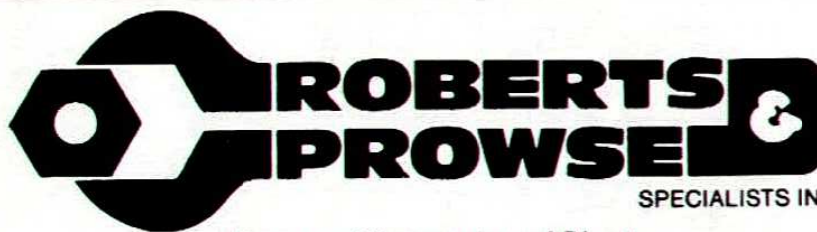
**SWINDON**



**34934 & 24839**



**SHRIVENHAM ROAD, SWINDON**



SPECIALISTS IN

*Process Pipework and Plant*

*Building Mechanical Services, Industrial Fabrication, Sheet Metalwork,  
Combustion Services, Thermal Insulation, Asbestos Removal, Engineering Merchants.*

**SOUTH MARSTON IND, ESTATE, SWINDON, SN3 4TQ. (0793) 825505**



## CASTLE'S

Office and Bakery

**4 and 5 MARKET STREET SWINDON**

**Telephone 522017**

Specialists

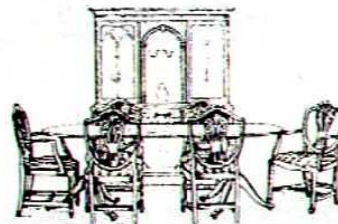
**Wedding Cakes, Birthday Cakes.**

**Try our Wholemeal Bread and**

**Wiltshire Lardies and**

**Delicious Dairy Cream Cakes**

*Howell's*  
THE QUALITY  
REPRODUCTION FURNITURE  
AND  
FRENCH POLISHING  
SPECIALISTS



**52 DEVIZES RD, OLD TOWN, SWINDON**

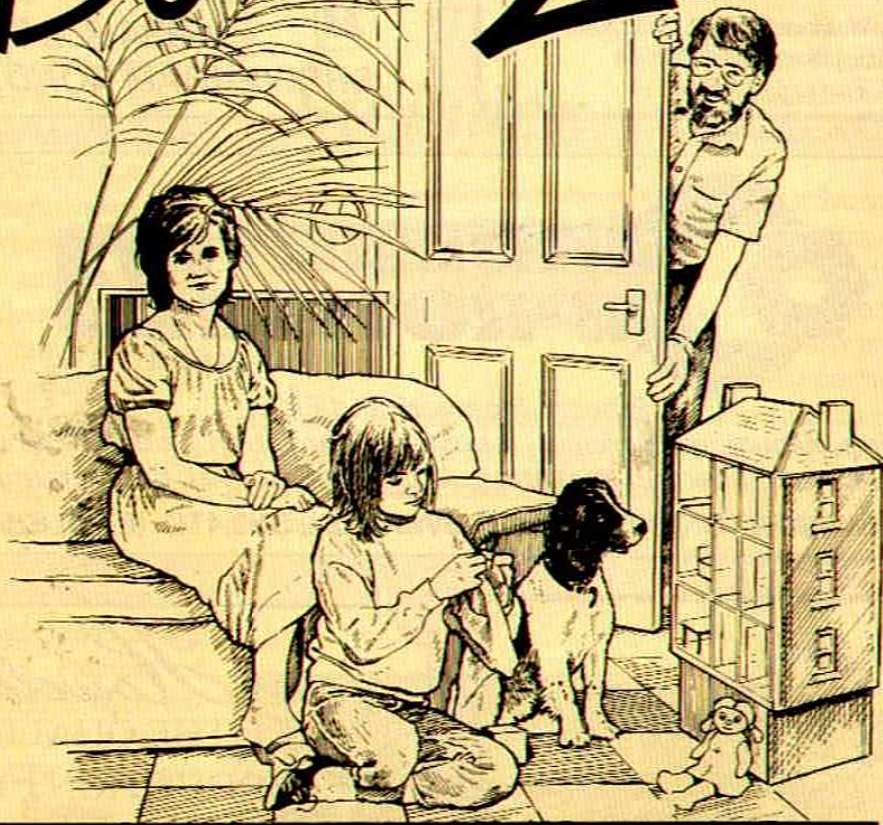
**TEL: 35658**

**MAY YOU REMAIN ON TOP LIKE WE ALWAYS ARE.**

# Hill House Insurance

THE ANSWER TO  
RISING HOUSEHOLD INSURANCE

# BONUS 25



Claim-free record for 12 months?  
Now you can reduce your Premiums  
with a **25%** No Claims Bonus

- ★ Bonus 25 is acceptable to leading Building Societies
- ★ You can insure your home and/or your contents
- ★ Sound cover with low rates

**SWINDO**  
128-129 COMM

# Hammond Brokers

CAR INSURANCE  
HOW TO CUT YOUR COSTS

We are one of the UK's largest insurance broking groups specialising in Motor and Household insurance. Contact us to be sure of professional advice and take advantage of some of the lowest premiums available.



- NEW & YOUNG DRIVERS . . . **SAVE** With our starter discounts
- SPORTS & GT DRIVERS . . . . **SAVE** With Lower Group Ratings
- FOREIGN CAR DRIVERS . . . **SAVE** With our special schemes
- LADY DRIVERS . . . . . **SAVE** Up to 25%
- MOTOR CYCLISTS . . . . . **SAVE** With our high bonus policy
- MATURE DRIVERS . . . . . **SAVE** With our over 50 & retired motorist policies



**N 618158**  
**ERCIAL ROAD**

# THE MOONRAKER

## A COUNTY GROUND



# Welcome

By Dave Eaton

## CRYSTAL PALACE

When Alan Mullery was relieved of the Manager's position at Selhurst Park, Crystal Palace turned to Steve Coppell to rekindle the Club's fortunes. The former Manchester United and England player, and a colleague of Swindon boss Lou Macari, had been forced to quit the game through a serious leg injury. In June 1984, at 28 years of age, he embarked on a new career. In his first season, 1984/85, he stabilised the Club's fortunes and laid the base for an assault on promotion from the Second Division.

The following season Palace finished fifth and last year just missed out on a place in the promotion play-offs. During the early part of last season Palace featured in the top three in the Division 2 table, but a run of seven games without a win saw the Club slump down the table.

A revival finally took Palace to sixth place . . . just one place away from the play-offs.

This season they are again handily placed and hopes are high of promotion back to the First Division for the first time since 1981.

Palace were formed in 1905 and were original members of Division 3 in 1920, and the following season gained a place in Division 2 as the Division 3 champions.

Four years later though they were relegated and remained a Third Division outfit until 1958.

They became a founder member of Division 4, but this was the beginning of an upward trend which saw them rise from 1961 in eight years to reach the First Division for the first time. During that period they finished as runners-up in Division 4, 3 and 2.

Four seasons were spent in the top flight before they dropped back into the Second and the following year were relegated again.

They managed to regain First Division status again; when they ended the 1978/79 season as Division 2 champions.

Life in the top flight was short-lived, just two seasons. Since 1981 Palace have been members of Division 2. During Palace's history they have used several grounds, with Selhurst Park becoming their permanent home since 1924.

**Steve Coppell (Manager).** Age 32. Born Liverpool (9.7.55). Joined Crystal Palace as manager in June 1984 having been forced to retire from the game because of a serious knee injury. Started his playing career with Tranmere Rovers in 1973 as an amateur whilst studying for his Economics Degree at Liverpool University. Signed professional in July 74 and transferred to Manchester United in 1974/75 season. He made 320 appearances for United scoring 53 goals and has 42 England caps. He was an outstanding performer for his country and held a permanent right wing position until his injury against Hungary which led to his ultimate retirement. His book 'Touch and Go' was published last year and received excellent reviews. He led Palace to finish 5th in the table in 1985/86 and 7th in 1986/87, after they had been fighting relegation for the previous four seasons.

**Mark Bright.** Aged 25. Born (6.6.62) Stoke-on-Trent. Started his career at Vale Park in August 1982 after impressing watching scouts at Leek Town. In the summer of '84 he moved to Leicester City. Just over two years later in November 1986 he moved south. During last season he made 28 appearances for Palace and hit the net eight times.

**Jim Cannon.** Aged 34. Born Glasgow (2.10.53) Club captain, he was ever present in the League last season with 42 appearances. He is the Club's longest serving player having made a record 617 appearances for Palace up to the end of last season. He joined the Club back in 1970 and was voted the supporters Player-of-the-Year at the end of last season.

**Tony Finnigan.** Age 25. Born London (17.10.62). After starting as an apprentice at Selhurst Park he moved to Fulham and then on to Finland, before returning to England where Steve Coppell offered him terms. He made his debut ironically at Fulham in March 1985 and made 39 appearances last season.

**Gavin Nebbeling.** Age 24. Born South Africa (15.5.63). A central defender, he had a spell at Northampton Town during season 1985/86 and last season made 25 appearances for Palace. He was signed from Arcadia Peps, Johannesburg in 1983 for £10,000.

**Ken O'Doherty.** Age 24. Born Dublin (30.3.63). Joined the Club from University College Dublin for £20,000 in February 1985. A solid defender, he has received Irish Under-21 caps and made his Palace debut in the Full Members Cup in 1985/86 season. Last season he made 14 appearances.

**Gary O'Reilly.** Age 27. Born Isleworth (21.3.61). A central defender signed from Brighton and Hove Albion on January 2nd 1987 for £40,000. Had made 71 League appearances for Brighton and started his

career with Tottenham Hotspur as an 18 year old, where he played alongside such well-known names as Steve Perryman, Cassie Ardiles and Glenn Hoddle. His first appearance for Palace was against Nottingham Forest in the FA Cup (3rd Round) on January 11th 1987.

**John Salako.** Age 19. Born 11.2.69. A product of the Youth system at Crystal Palace. He has been leading goal scorer for the past two years with the Youth team. An all round athlete he made his debut against Barnsley last January 1987 since when he made three further appearances to the end of the 1986/87 season.

**Alan Pardew.** Age 26. Born Wembley (18.7.61). Midfielder Alan joined Palace from Yeovil Town for £7,000 during last season, but failed to break into the first team. This season though he has made his League debut.

**Neil Redfern.** Age 22. Born Dewsbury (20.6.65). He is a right-sided midfielder player and has already had a varied career starting as an apprentice at Nottingham Forest prior to joining Bolton Wanderers in June 1982, followed by a spell on loan at Lincoln City in the spring of '84. After his period at Sincil Bank which saw him make 100 appearances for the Imps, he signed for Doncaster Rovers in the summer of 1986, and last season scored 14 goals for 'Donny'. Steve Coppell signed him last summer for £85,000.

**Gary Stebbings.** Age 22. Born Croydon (11.8.65). Joined Palace straight from school as an apprentice and has appeared for the Club as a midfielder and a full back. He is former captain of the England Youth team. He made 26 first team appearances during last season's campaign.

**Geoff Thomas.** Age 23. Born Manchester (5.8.64). Joined Palace from Crew Alexandra in May 1987. Spent three years at Cresty Road where he graduated to Club captain. It took a £50,000 fee for Palace to secure his services. Formerly with Rochdale he can play in a variety of midfield roles. Last season scored 9 goals for Crew.

**Ian Wright.** Age 24. Born Woolwich (3.11.63). Joined Palace from Greenwich Borough. He has a good scoring record with Palace and last season scored 9 goals.

**Perry Suckling.** Born Leyton. A top class goalkeeper, who has been capped at Under-21 level. Was signed from Manchester City earlier in the season. Began as an apprentice at Coventry before moving on to Maine Road.

**Glen Pennyfather.** Age 25. Born Billerica (11.2.63). Signed from Southend Utd, whom he joined as an apprentice. Made over 250 appearances for the Essex Club.

Lowndes Lambert UK Ltd Sponsors of  
Swindon Town F.C.



# THE MOONRAKER



**Back Row:** (left to right): Gary Stebbing, Mark Hone, Ian Wright, Gavin Neggeling, Phil Barber.

**Middle Row:** Ian Evans (Asst. Manager), Paul Hammond, Ken O'Doherty, Perry Suckling, John Salako, Dennis Bailey, Jim Cannon (Capt.)

**Front Row:** Richard Shaw, Alan Pardew, Tony Finnigan, Steve Coppell (Manager), Glenn Pennyfather, David Burke, Neil Redfean.

## POST-WAR MEETINGS BETWEEN SWINDON TOWN AND CRYSTAL PALACE

### At The County Ground Football League

03.11.1945	L1-3	Rosenthal	
15.03.1947	W1-0	Stephens W pen.	13,711
06.09.1947	D0-0		17,619
26.03.1949	W1-0	Jones W M	11,678
04.03.1950	W4-2	Onslow, Dawson, Jones W M 2	15,067
26.08.1950	W2-0	Peebles, Hudson	13,648
05.01.1952	L0-2		10,863
01.11.1952	L3-6	Owen 2, Bain	9,080
13.02.1954	D1-1	Lunn	8,907
12.02.1955	D0-0		4,715
26.12.1955	D0-0		9,082
23.02.1957	W3-1	Fountain, Edwards 2 (1 pen)	6,499
22.02.1958	D0-0		10,303
23.12.1961	W5-0	Smith 2, Atkins 2, Hunt R P	7,707
02.02.1963	W1-0	Darcy R P 2	9,712
25.08.1964	W2-0	Hunt R P 2	17,446
27.04.1974	L0-1		11,964
22.03.1975	D1-1	Eastoe	11,545
04.11.1975	L1-2	Moss	10,599
02.11.1976	D1-1	Syrett	11,323

### Football League Cup

Nil

### F.A. Cup

#### At The County Ground

10.12.1927	D0-0		16,360
20.11.1954	L0-2		11,359

### At Selhurst Park Football League

10.11.1945	L1.10	Emery pen.	15,750
09.11.1946	L1-4	Lucas	11,800
17.01.1948	D1-1	Kaye	12,240
30.10.1948	D1-1	Jones W M	15,656
15.10.1949	D2-2	Simmet, Jones W M pen.	7,237
23.12.1950	L0-2		14,204
08.09.1951	W1-0	Onslow	9,983
21.03.1953	L0-3		18,615
26.09.1953	L2-3	Lambert, Cross	14,6483
25.09.1954	D0-0		10,608
27.12.1955	W2-0	Edwards, Micklewright	13,459
13.10.1956	D0-0		14,943
12.10.1957	L1-4	Micklewright	24,184
26.08.1961	L1-3	Trollope	16,376
15.09.1962	D0-0		18,517
02.09.1964	L1-3	Summerbee	17,881
01.12.1973	L2-4	Eastoe, Syrett	13,964
07.09.1974	L2-6	Eastoe 2	15,844
07.02.1976	D3-3	Stroud, Syrett 2	18,501
12.04.1977	L0-5		9,077
24.10.1987	L1-2	White	

### Football League Cup

Nil

### F.A. Cup

#### At Sydenham

15.01.1910	W3-1	Fleming, Bown, Tout	15,000
------------	------	---------------------	--------

#### At The Nest

23.02.1924	W2-1	Wareing, Fleming	20,000
------------	------	------------------	--------

#### At Selhurst Park

14.12.1927	W2-1	Morris 2	8,500
------------	------	----------	-------

#### Division 3 Play-Offs Final (Replay)

#### At Selhurst Park

29.05.87		Swindon Town 2, (white 2) Cillingham 0	20,000
----------	--	---	--------

\*Statistics supplied by Paul Plowman

Official Suppliers to Swindon Town F.C. and Many Other Leading League Clubs  
DO CALL AND SEE DOUG WOODMAN AND VIEW THE LARGE RANGE OF FOOTBALL  
AND OTHER SPORTS GOODS AVAILABLE FROM THE OFFICIAL CLUB SHOP  
OPEN 9:00 to 12:00 2:00 to 5:00 DAILY

# SPALL SPORTSWEAR LIMITED



Hill House Hammond  
a subsidiary of Lowndes Lambert UK Ltd.

# THE MOONRAKER



# 2

# &

# 3

New faces were introduced into our 'Abbey National Building Society' sponsored Youth Team when they met local rivals Bristol City in a South East Counties League fixture at Lydiard Park on Saturday March 5th.

The three newcomers were goalkeeper Paul Thompson from Winchester, defender Jamie Turton from Birmingham with local discovery Lee Spalding, being nominated as one of the substitutes.

The match opened in sensational goal-scoring form when after only two minutes Dave Barnett's free kick dropped at **Adrian Viveash's** feet, his left foot shot beating goalkeeper Weaver.

It took City two minutes to equalise when, in their first attack, Richard Morgan conceded a penalty. Paltrey scored from the spot, giving Thompson no chance.



• **Adrian Viveash** - his two goals against Bristol City paved the way for the Towns 4-2 win.

Within four minutes the Town were back in the lead when **Adrian Viveash** headed home a cross from the right wing. After half an hours play **Paul Hunt** escaped his marker and drew goalkeeper Weaver before slotting home the Town's third goal.

The Town continued to press in the second half but were unable to increase their lead until the 60th minute when, after three shots had been blocked, **Nicky Summerbee** finally drove the ball home. Bristol City reduced the arrears after a right wing cross was tapped home by substitute Rowe.

**Team: Thompson, Barnett, Morgan, Summerbee, Turton, Sandrey, Lea, Marshall, Hunt, Hammersley, Viveash. Substitutes: Spalding (for Barnett in 46th minute), Gassner (for Summerbee in 68th minute).**

.....

New signing Paul Bodin made a goal-scoring debut for the Town when he headed home a Phil King cross to give the Town an early lead against Arsenal in a 'Sunday Mirror' Football Combination match at the County Ground on Saturday March 5th.

Paul, signed the previous day for £25,000 from Newport County, fitted in well with his new colleagues. Arsenal, with England Internationals Steve Williams and Graham Rix, were a match for what was virtually a Town first team.

Deno Connelly equalised for the 'Gunners' in the 37th minute. The Town took the lead again in the 57th minute when **Steve White** volleyed home following a Bobby Barnes corner. Paul Merson equalised for the North London Club with five minutes of play remaining, but the Town were not to be denied. **Steve White** scored the winner in the last minute following a splendid run by Bobby Barnes to give the Town a 3-2 win.

**Team: Digby, Hockaday, King, Henry, Parkin, Gittens, Barnes, Foley, Quinn, White, Bodin. Substitute: Simpson.**



• **Paul Bodin** - it was a goalscoring debut for the former Cardiff City and Newport County midfield player when he opened the scoring against Arsenal at the County Ground.

.....

Our Football Combination team took a merited point from their match with Crystal Palace on Wednesday March 9th. The game, played at Tooting and Mitcham, ended in a 1-1 draw. Town skipper Colin Calderwood played in his first match following his two match suspension.

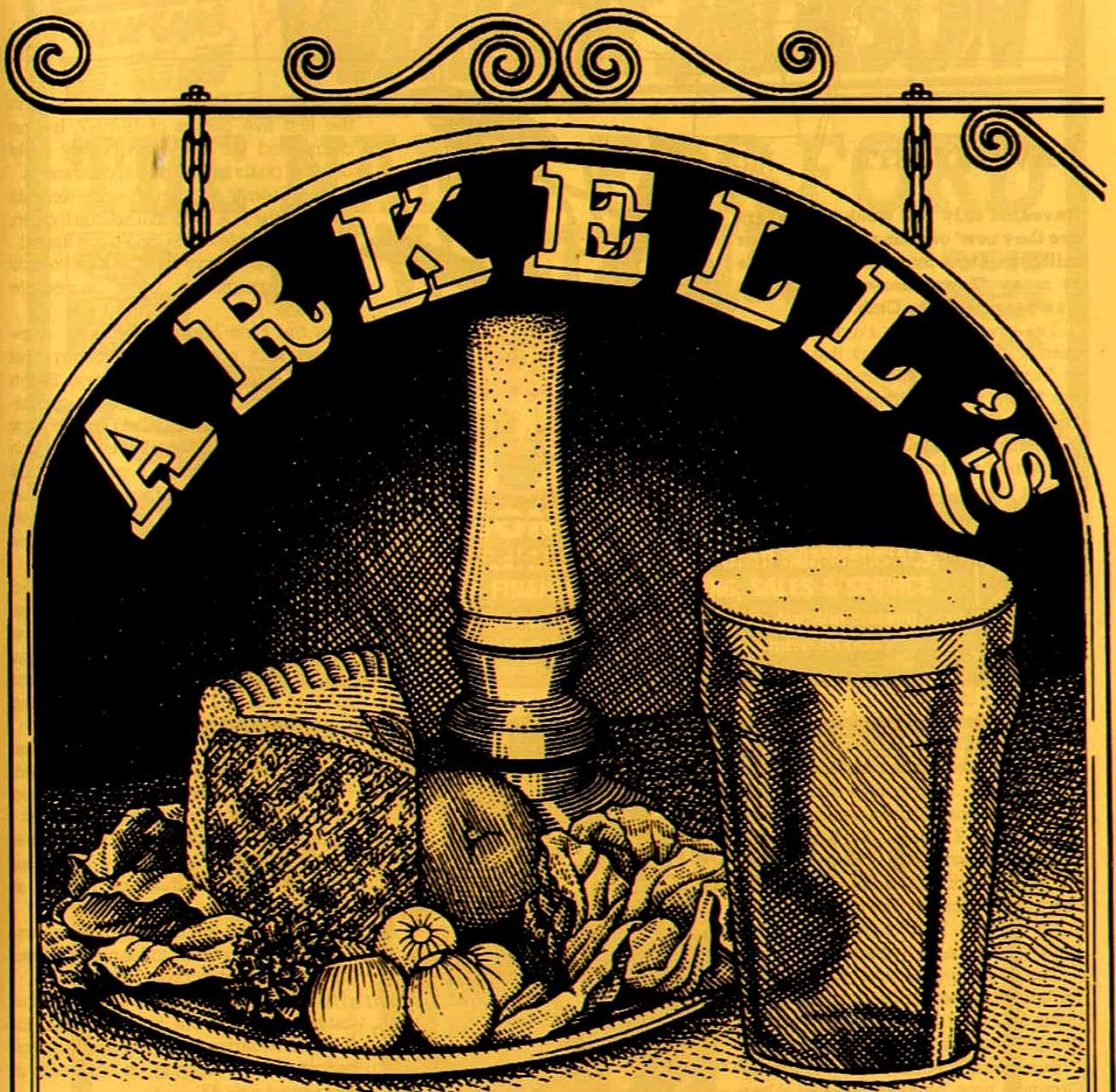
The Town opened strongly and both Steve White and Bryan Wade went close with good efforts. The Town maintained their early supremacy and it came as no surprise when **Charlie Henry** went round Palace keeper Spears after fifteen minutes play to open the scoring from an acute angle.

The first half saw the Town unable to confirm their superiority in terms of goals.

The second half was a scrappy affair with Crystal Palace equalising within five minutes of the restart when centre half Harris headed home from a corner. Two sound defences remained on top during the second half and the match eventually petered out into a rather disappointing affair.

**Team: Hammond, McLoughlin, Casserly, Merriman, Henry, Calderwood, Simpson, Barnard, Wade, White, Viveash. Substitute: Barnett (for White in 50th minute).**

Special rates for Retired Motorists.  
Hill House Hammond Insurance Brokers.



*Ask for Arkell's.  
It's full of Wiltshire flavour.*

Arkell & Sons, Kingsdown Brewery, Swindon.

# THE MOONRAKER



## DAVID SYRETT

**Revealed only last week in a 'where are they now' column as a Warminster milkman, Dave Syrett was the sparkle in many 'Town' line-ups during his five years with the Club.**

The late great Fred Ford was instrumental in the groundwork that resulted in David signing apprentice forms for the 'Town' in the summer of 1972. After Peter Syrett, David's elder brother and a Wiltshire youth's full back was signed at the same time but played in only a few games before returning to their home city of Salisbury. Incidentally Peter was still playing only recently for nearby Downton as an experienced player manager.

David's career at the County Ground was however more successful, making his full first team debut against Preston North End as a substitute at Deepdale in September 1973.

His first start in a 'Town' jersey came in a no score draw at Nottingham Forest's City Ground in October the same season.

The goalscoring instinct of the young striker first bore fruition against Crystal Palace in a 4-2 defeat – one of many that relegation season. That goal was followed by four others in the season, none of them in wins for the 'Town', but with only 7 out of 42 in 1973/74 that would have been quite an achievement.

The following campaign brought a further 19 appearances but only three goals for Syrett as Peter Eastoe led the goalscoring charts with 26 successes.

Being totally eclipsed by the County Ground's new hero, resulted in a loan period with Wolves for Syrett, the Club from which Eastoe had come in 1674.

His spell at Molineux benefitted the 'Town' far more than the Wanderers as David returned after only a month to display a tremendous resurgence in form.

In the period after Christmas 1975, Syrett was unstoppable with five goals in as many games during January and

# A to Z

## OF SWINDON TOWN

By Michael Scott



February. The last two games of the 1975/76 season brought three goals for David including one in the amazing 5-1 win over Walsall in which Trevor Anderson scored a hat-trick of penalties, three of five awarded!

David seemed destined to carry one

where he had left off with three goals in the first five games of 1976/77, but he completed the season with only eight League goals from his 43 appearances.

The 'Town's' and Syrett's achievements came in the F.A. Cup that season though, in a memorable run to the Fourth Round.

David Syrett scored in all four Rounds that campaign, in some incredible matches.

In the First Round, the 'Town' were paved with non-League Bromley and ran out 7-0 winners with David Syrett netting twice. More non-League opposition followed in Round Two with a draw at Hitchin bringing another London Club to the County Ground. A great fight by the part-timers saw a Dave Syrett's goal hold them into extra time, where two goals from David Moss ensured the 'Town's' place in Round Three.

Second Division Fulham provided Swindon Town's next opposition, George Best, Bobby Moore and all. A 3-3 draw at Craven Cottage set up an incredible tie at the County Ground with the 'Town' running out 5-0 victors, Syrett netting twice.

David's goal in the next Round at the County Ground against First Division Everton was somewhat overshadowed by the 'Town's' other goal in a 2-2 draw.

Kenny Stroud's goal to grace any game deserved to be a match winner, but brought only a fruitless replay at Goodison.

At the start of the 1977/78 season, David had moved on to Mansfield Town for whom he top scored with 16 goals.

Though dogged by injury later in his career, Syrett went on to appear for Walsall, Peterborough and Northampton before finally hanging up his boots in 1983 aged only 27.

Whereas Swindon Town had lost out to Southampton in signing another Salisbury striker, Mike Channon, they secured and nurtured the considerable talents of David Syrett to their great advantage during his time with the Club. The 'Town's' mid-seventies strike force certainly benefitted greatly from a modern day rarity – a Wiltshire born successful striker.

**Bonus 25 – House and Contents Insurance with a 25% No Claims Discount.**

**Hill House Hammond Tel: 618158**



# WALKER JACKSON

## THE NAME FOR FORD IN WILTSHIRE



### WALKER JACKSON & CO. LTD.

**HEAD OFFICE**  
Car Service & Parts,  
Accounts & Administration  
Marlborough Road  
Tel: Swindon 20002

**NEW & USED CAR SALES,  
LEASING & FINANCE**  
Fleming Way Roundabout  
Tel: Swindon 20002

**NEW & USED COMMERCIALS,  
LEASING, SALES & SERVICE**  
Coped Hall, Wootton Bassett  
Tel: Swindon 853344



*Established as a Ford Dealer for over 60 years*

**Win £10 worth of Augustus Barnett vouchers!**

## THE Augustus Barnett Challenge

Answer correctly the following football teasers and then re-arrange the first letter of each answer to find the name of a famous drink.

£10 worth of Augustus Barnett gift vouchers, redeemable at any of our branches nationwide, given to the first correct entry drawn seven days after publication.



West Ham  
Stalwart



Rotherhams  
Home



The Filberts



Division 3  
New Boys



Scottish  
Coastal  
Team

Drink.....Always available at Augustus Barnett

Send answer on postcard to: Football, Augustus Barnett, 53 Marlowe Ave, Swindon SN3 3HQ  
Rules: 1. Entry restricted to persons of 18 years and over. 2. No correspondence will be entered into

# WE'RE TALKING FOOTBALL.

*"It's worse than losing a war, a national crisis of the highest magnitude."*

LORD WIGG,  
*after Poland had knocked out England, 1973.*

*"I suppose it will be an all-ticket match."*

DANNY BLANCHFLOWER,  
*on being put into the reserves.*

*"There is a rat in the camp trying to throw a spanner in the works."*

CHRIS CATTLIN,  
*Brighton manager, 1983.*

● ● ● YOU'RE

BETTER OFF

TALKING TO



BARCLAYS

*"The best team always wins. The rest is only gossip."*

JIMMY SIRREL,  
*Notts County manager, 1985.*

# THE MOONRAKER

## SIDELINES



### COST OF POLICING LEAGUE MATCHES RISES BY 16%

Football Trust pay £1.28 million to police League Football last season.

The Football Trust, which is funded entirely by Littlewoods, Vernons and Zetters from their Spotting-the-Ball competition, completed a total payment of £1.28 million to Clubs from the Football League, Scottish Football League and GM Vauxhall Conference to cover 35% of police charges at League matches last season.

According to statistics released by The Football Trust, the cost of policing League matches in Great Britain increased during 1986-87 by 16.6%, rising from a total of £3.13 million to their highest ever level of £3.65 million. These figures follow the 13.8% increase shown in the previous season when costs rose from £2.75 million in 1984-85 to 3.13 million during 1985-86.

Richard Faulkner, Deputy Chairman of The Football Trust, commented: "The Trust is particularly keen to encourage more effective policing at football grounds and our commitment to cover 35% of police charges is designed to enable Clubs to provide a safer environment for supporters to watch the game. It is undeniable that over recent years, better policing, complemented by other Trust initiatives such as closed circuit television and improved transport facilities for supporters, has served to lessen incidents of serious crowd disorder."

Further analysis of the Trust's activities reveals that during season 1986-87:-

- \* The Football League First Division accounted for 44% of the total policing costs in Britain.
- \* The highest charges in England were paid by Chelsea, Liverpool, Everton, Manchester United and Arsenal - each in excess of £100,000.
- \* For the third consecutive season Luton Town, despite the absence of away fans at League matches, paid the highest rate per 1,000 spectators in the First Division - £312.
- \* Millwall paying the highest rate in England - £368 per 1,000 spectators.

### I. POLICE CHARGES 1984/85 - 1986/87

	(£)	% Inc.
1984-85	2,756,032	

1985-86	2,137,543	- 13.8
1986-87	2,658,854	- 16.6
TOTAL	9,552,429	

### II. FOOTBALL TRUST CONTRIBUTION TO POLICING COSTS 1984/85 - 1986/87

	(£)
1984-85	953,382
1985-86	1,098,141
1986-87	1,280,600
TOTAL	3,332,123

### III. POLICE CHARGES BY DIVISION 1984/85 - 1986/87

	1984-85 (£)	1985-86 (£)	1986-87 (£)
<b>Football League</b>			
Div. 1	1,382,683	1,532,500	1,594,819
Div. 2	564,259	628,959	741,901
Div. 3	288,993	288,884	316,289
Div. 4	155,051	164,879	239,351

### GM Vauxhall Conference

	-	-	8,674
--	---	---	-------

### Scottish Football League

Premier	330,994	473,903	700,546
Div. 1	25,774	36,631	45,616
Div. 2	8,308	12,057	11,658
TOTAL	2,756,032	3,137,543	3,658,854

### IV. ENGLAND: HIGHEST POLICE CHARGES 1986-87

	Police Charges (£)	Trust Grant (£)	Av. Att. (000's)
Chelsea	114,748	40,161	17,694
Liverpool	113,068	39,574	36,258
Everton	111,213	38,293	32,935
Man. Utd.	108,497	37,974	40,594
Arsenal	102,585	35,905	29,022
Tottenham H.	99,161	34,706	25,881
West Ham Utd.	95,987	33,595	20,607
Leeds Utd.	86,830	30,390	17,612
Q.P.R.	75,430	26,400	11,753
Sunderland	70,043	24,515	13,600

### V. ENGLAND: HIGHEST COST PER 1,000 SPECTATORS 1986-87

	Police Charges (£)	Trust Grant (£)	86-87 Cost per 1000	85-86 Cost per 1000
Millwall	33,315	11,660	368	(269)
Luton T.	67,390	23,586	312	(272)
Chelsea	114,748	40,161	308	(227)
Q.P.R.	75,430	26,400	305	(259)
Charlton	54,167	18,958	286	(235)
Exeter C.	16,703	5,846	276	(144)
Oxford Utd.	58,717	20,550	269	(235)
Huddfd T.	24,547	8,591	264	(200)
Brentford	23,531	8,236	261	(267)
Doncaster R.	7,873	2,755	251	(215)

- \* Policing costs in Scotland have more than doubled since 1985-86 with charges rising from £0.36 million to £0.75 million last year.
- \* Celtic have the highest police charges in Great Britain - £225,219 - virtually double the highest figure in England.
- \* Neighbours Glasgow Rangers have the second highest police charges in Britain - £176,295 - two and a half times higher than their 1984-85 figure.
- \* Celtic paid the highest cost per 1,000 spectators in Great Britain - £404.00.
- \* For the past two seasons, Swansea City have proved the Football League's most cost effective Club to police in terms of charges per 1,000 supporters.

Richard Faulkner warned: "There are certain trends highlighted by today's statistics which cause the Trust concern. A number of Clubs have extraordinarily high charges which may require special investigation." He added: "On the more positive side however, we intend to review ways of extending our police charge scheme possibly to include maintenance police charges for CCTV equipment."

The Football Trust introduced its policy to assist with police charges in 1985 when the three pools firms increased their donation from Spotting-the-Ball. The amount the Trust allocates toward police charges alone is now equivalent to 3% of the turnover of the competition. Since 1984-85, the Trust's support has steadily increased and now totals £3.3 million over the three season period.

# SIDELINES

Hill House Hammond Insurance Brokers -  
Branches Nationwide.

# THE MOONRAKER



## A RAKER'S VIEW



Swindon's front three sharpshooters on their way to beating Barnsley at the County Ground.

1. Jimmy Quinn attempts to add to his penalty kick success.
2. Bobby Barnes shoots just wide.
3. Steve White scores his first, and the Town's second, goal of the night.
4. White goes for his hat-trick, but has to make do with a couple . . .



# THE MOONRAKER



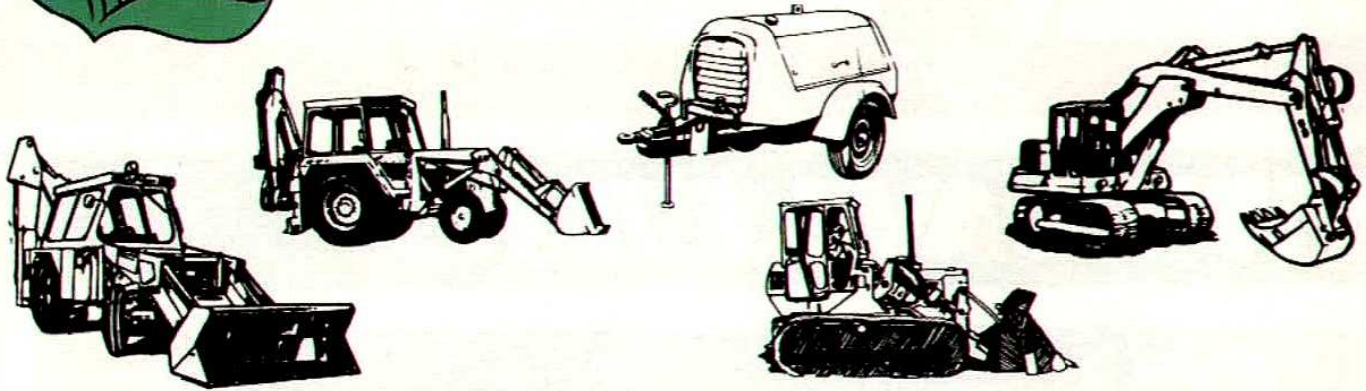
## WITH DAVE EVANS





# TRANS PLANT

## Contractors Plant Hire



### Transplant Limited

Head Office  
Broad Hinton  
Swindon  
Wiltshire SN4 9PF  
Telephone : Swindon  
(0793) 73671

Reading Depot  
Toutley Works,  
Toutley Road,  
Wokingham,  
Berks. RG11 5QN  
Telephone: Reading  
(0734) 786278

Bristol Depot  
Emery Road,  
Brislington Trading Estate,  
Bristol BS4 5PF  
Telephone : Bristol  
(0272) 779211

## WESSEX conservatories

# For growing families. Not tomatoes



You don't have to look too hard at many so-called conservatories to realise that they started as little more than lean-to greenhouses.

But take a look at a Wessex and you'll see the kind of features that are more relevant to people than to growbags.

Like toughened glass. Not much use to a tomato plant, but vital when children are around.

Like architectural double seals to retain the glass. Not wire clips and exposed sharp edges.

Like a 'lifetime' white electrophoretic finish, for maintenance-free elegance.

Like the flexibility to tailor a conservatory precisely to your home. And like the option of a tinted glass roof.

Of course, your average tomato **will** grow beautifully in a Wessex – more so, perhaps, than in a conventional greenhouse.

Take a good look at the Wessex range – the Winchester, the Marlborough and the Salisbury. The cost? A typical 10' x 8' model will cost less than £1600.

A bit much when you're growing tomatoes. But peanuts when you're growing families.

## WESSEX conservatories

Wessex Aluminium Ltd.  
Unit 8, Wyndham Road,  
Hawksworth Industrial Estate,  
Swindon, Wilts. SN2 1EJ  
Tel: (0793) 644633  
Telex: 449703 TELSER G

I'd like to be put in the picture. Please send me details and the address of my nearest show-site.

Name \_\_\_\_\_

Address \_\_\_\_\_

Postcode \_\_\_\_\_

# THE MOONRAKER PAPER



# talk!!

The Towns match at Oldham had the appeal of Chipperfields according to Paul Hickson's opening sentences in his Monday morning column of the 'Western Daily Press'.

Former Town midfielder John Kelly was unable to line-up against his former teammates because of injury. John's League appearances have been limited this season in what must be the most depressing time of his career to date.

The circus came to town three days early. Gandy's circus isn't due at Boundary Park till tomorrow but more than 5,000 customers were almost fooled.

Who needs clowns and acrobats when you've got seven goals, a magic carpet and a sudden snow storm to batter the highest football ground in England?

In the midst of this mad mixture Swindon were twice ahead, yet still found themselves two goals behind in the final minute.

As if that wasn't bad enough the Swindon players had to ensure the good-humoured taunts of former team-mate John Kelly, shouting from the sidelines: "You'll be out running tomorrow lads!"

That two-hour midweek marathon at Luton took its toll on super-fit Swindon - but they made the most of their chances to push a lively Oldham side to the limit.

Jimmy Quinn and Paul Bodin gave them the lead in the 26th and 66th minute, cancelled out by goals from Frankie Bunn (49th) and Andy Ritchie (66th).

Ritchie shot Oldham ahead from the spot four minutes later and Roger Palmer sealed it in a minute from time. Substitute Charlie Henry reduced Swindon's deficit 30 seconds into injury time.

Oldham manager Joe Royle told Paul after the match that he was relieved to see Bobby Barnes substituted.

Former Bristol City striker Joe Royle, now happily transplanted to Oldham, admitted later that he had feared winger Bobby Barnes.

"I was pleased to see Barnes get taken off by Lou (Macari)," he revealed.

"Bobby has been giving sides problems but we managed to keep him wrapped up."

Although Joe Royle was impressed by the depleted Town outfit he did have one or two reservations about the Town team!

The Oldham boss, like most managers was impressed by the Swindon - but not enough to recommend them for promotion.

"They've done well to get where they are. But let's be honest, they're not going any further.

"You can point to teams like Wimbledon who've survived in the First Division playing the same long-ball game.

"But they have one or two quality players. They're capable of playing quality football when they need to."

Joe's comparison with Wimbledon was a natural one for most managers to make but the 'Dons' did not make that transition from Fourth Division to the First in three seasons.

.....

The 'Daily Express' have been covering the Kenny Dalglish story and have contained comments by the Town's Lou Macari on the Anfield boss when he was at Glasgow Celtic in the early days of his career.

Glasgow was - and is - a city which worships its footballers with an all-consuming passion. Lou Macari was already on the Celtic ground staff. "You were in awe of being there and in awe of the first team players. There was no conversation, you just looked at them. Kenny was the same.

"We had no social life. If you took your girlfriend out to a restaurant on a Saturday

night that was a big deal. We wouldn't dare be seen in a pub, never mind a club."

Macari, like McNeill, noticed Dalglish immediately. "As a 15-year-old Kenny didn't have natural ability. He used to be brought back in the afternoons for extra practice! He worked hard, he was pushed by the management and within a couple of years he had been transformed into a tremendous player.

## PROMOTION

"Incredibly, one of the worst parts of his game was his finishing. But he practiced that everyday. He'd have a goalkeeper, he'd have a ball at his feet, bang, bang, bang on and on."

Celtic's reserve side was known as the Quality Street Kids. They were so good they tried to get into the Scottish Second Division!

They did say, however, that if they won promotion they wouldn't go up. This would have created a most interesting fixture Celtic versus their own reserves.

"At that time," McNeill says, "they played Rangers reserves at Ibrox and they won something like 5-1. It was astonishing. Those things don't happen..."

Macari: "You'd get 10,000 and 15,000 at some of our games. We needed to beat Partick Thistle by seven clear goals to top the section we were in.

"Sean Fallon, managing us, said: 'Right, this is a mammoth task. You're on £25 a man.'

"Normally we got £1.50 for a win, £25 was nearly a weeks wages. We were wetting ourselves with excitement.

"We were 6-0 up at half time and we won 12-1, three for myself, three for Kenny. That was a game which summed the team up."

Learning to drive?  
Make sure of a competitive quote for your insurance.  
Hill House Hammond Tel: 618158

# THE MOONRAKER

## STICKS • STATISTICS • STATISTICS



### SWINDON TOWN 1987/88

DATE	OPPONENTS	V	Attnd	Result	1	2	3	4	5	6	7	8	9
15.8.87	SAT BRADFORD CITY	A	10,553	0-2	Digby	Hockaday	King	Coyne	Parkin	Calderwood	Bamber	Gittens	
18.8.87	<b>TUE BRISTOL CITY 7.45 (LC)</b>	<b>H</b>	<b>6,807</b>	<b>3-0</b>	Digby	O'Regan	King	Kamara	Parkin	Calderwood	Kelly	Gittens†	
22.8.87	<b>SAT SHEFFIELD UNITED</b>	<b>H</b>	<b>8,637</b>	<b>2-0</b>	Digby	O'Regan	King	Kamara	Parkin	Calderwood (1)	Bamber	Kelly	
25.8.87	TUE BRISTOL CITY (LC)	A	7,013	2-3	Digby	O'Regan	King	Kamara	Parkin	Calderwood	Coyne†	Berry (pl)	
29.8.87	SAT WEST BROM.	A	8,503	2-1	Digby	Hockaday	King	Kamara	Parkin	Calderwood	Bamber	Kelly (1)	
31.8.87	<b>MON HULL CITY 7.45</b>	<b>H</b>	<b>9,600</b>	<b>0-0</b>	Digby	Hockaday	King	Kamara	Parkin	Calderwood	Bamber	Berry†	
5.9.87	SAT MIDDLESBROUGH	A	9,344	3-2	Digby	Hockaday	King	Kamara	Parkin	Calderwood	Bamber (1)	O'Regan	
12.9.87	<b>SAT BIRMINGHAM CITY</b>	<b>H</b>	<b>9,128</b>	<b>0-2</b>	Digby	Hockaday	King†	Kamara	Parkin	Calderwood	Bamber	O'Regan†	
15.9.87	TUE BARNLEY	A	7,773	1-0	Digby	Hockaday	King	Kamara	Parkin	Calderwood	Bamber (1)	O'Regan†	
19.9.87	SAT IPSWICH TOWN	A	11,460	2-3	Digby	Hockaday	King	Kamara	Parkin	Calderwood	Bamber	O'Regan†	
22.9.87	<b>TUE PORTSMOUTH 7.45 (LC)</b>	<b>H</b>	<b>9,878</b>	<b>3-1</b>	Digby	Hockaday	King	Kamara	Parkin	Calderwood	Bamber	White†	
26.9.87	<b>SAT READING</b>	<b>H</b>	<b>10,073</b>	<b>4-0</b>	Digby	Hockaday	King	Kamara (2)	Parkin (1)	Calderwood†	Bamber	Henry†	
29.9.87	<b>TUE SHREWSBURY T.</b>	<b>H</b>	<b>8,261</b>	<b>1-1</b>	Digby	Hockaday	King	Kamara	Parkin	Calderwood	Bamber	Henry†	
3.10.87	SAT MILLWALL	A	7,108	2-2	Digby	Hockaday	King	Kamara	Parkin	Calderwood	Bamber	O'Regan†	
7.10.87	WED PORTSMOUTH 8.00 (LC)	A	8,727	3-1	Digby	Hockaday	King	Kamara	Parkin	Calderwood	Bamber (2)	O'Regan†	
10.10.87	<b>SAT OLDHAM ATHLETIC</b>	<b>H</b>	<b>8,160</b>	<b>2-0</b>	Digby	Hockaday	King†	Kamara	Parkin	Calderwood	Bamber (1)	White (1)	
20.10.87	<b>TUE STOKE CITY</b>	<b>H</b>	<b>9,160</b>	<b>3-0</b>	Digby	Hockaday	King†	Kamara	Parkin†	Calderwood	Bamber	White (2)	
24.10.87	SAT CRYSTAL PALACE	A	9,077	1-2	Digby	Hockaday	King	O'Regan	Parkin	Calderwood	Bamber	White (3)	
28.10.87	<b>WED WATFORD 8.00 (LC)</b>	<b>H</b>	<b>13,833</b>	<b>1-1</b>	Hammond	Hockaday†	King	O'Regan†	Parkin	Calderwood	Bamber	White†	
31.10.87	<b>SAT MANCHESTER CITY</b>	<b>H</b>	<b>11,536</b>	<b>3-4</b>	Hammond	Hockaday†	King	Barnard	Parkin	Calderwood	Bamber (1)	White†	
3.11.87	TUE WATFORD 8.00 (LC)	A	12,286	2-4	Hammond	Hockaday	King	O'Regan†	Parkin	Calderwood	Bamber	Kamara	
7.11.87	SAT LEICESTER CITY	A	8,346	2-3	Hammond	Hockaday	King	Barnard	Parkin	Calderwood	Bamber	Kamara	
10.11.87	TUE BLACKBURN R. (Simod)	A	3,638	2-1	Hammond	Hockaday	King	Barnard	Parkin (1)	Calderwood	Bamber	Kamara	
14.11.87	<b>SAT PLYMOUTH ARGYLE</b>	<b>H</b>	<b>9,616</b>	<b>1-1</b>	Flowers	Hockaday	King	Kamara	Parkin	Calderwood	Bamber	Barnard	
21.11.87	SAT LEEDS UNITED	A	15,457	2-4	Flowers	Hockaday	King†	Coyne	Gittens	Calderwood	Bamber	Barnard	
28.11.87	<b>SAT A.F.C. BOURNEMTH</b>	<b>H</b>	<b>7,934</b>	<b>4-2</b>	Flowers	Hockaday	King	O'Regan	Gittens	Calderwood	Barnes (1)	Bamber	
1.12.87	<b>TUE HUDDERSFIELD T. 7.45</b>	<b>H</b>	<b>6,963</b>	<b>4-1</b>	Flowers	Hockaday	King	Kamara	Gittens	Calderwood	Bamber	White†	
5.12.87	SAT ASTON VILLA	A	16,127	1-2	Flowers	Hockaday	King	Kamara	Gittens	Calderwood	Barnes	Bamber	
20.12.87	SUN SHEFFIELD UTD (11 am)	A	7,248	0-1	Flowers	Hockaday	King	Kamara	Gittens	Calderwood	Barnes	Bamber	
23.12.87	<b>WED DERBY C. 7.45 (Simod)</b>	<b>H</b>	<b>8,133</b>	<b>2-1</b>	Hammond	Hockaday (1)	King	Kamara	Parkin	Calderwood	Bamber	Gittens	
26.12.87	SAT READING (11 am)	A	8,939	1-0	Crichton	Hockaday	King	Kamara	Gittens	Calderwood	Barnes	Bamber	
28.12.87	<b>MON IPSWICH TOWN (3pm)</b>	<b>H</b>	<b>12,429</b>	<b>4-2</b>	Crichton	Hockaday	King (1)	Kamara	Gittens	Calderwood	Bamber (1)	Parkin	
1.1.88	<b>FRI WEST BROM. (3pm)</b>	<b>H</b>	<b>12,155</b>	<b>2-0</b>	Crichton	Hockaday	King	Kamara	Parkin	Calderwood	Bamber†	Gittens	
2.1.88	SAT BIRMINGHAM CITY	A	7,829	1-1	Crichton	Hockaday	King	Kamara†	Parkin	Calderwood	Bamber†	Gittens	
9.1.88	<b>SAT NORWICH (FACup) (3pm)</b>	<b>H</b>	<b>12,807</b>	<b>0-0</b>	Hammond	Hockaday	King	Kamara	Parkin	Calderwood	Bamber†	Gittens	
13.1.88	WED NORWICH (FACup)	A	12,501	2-0	Hammond	Hockaday	King	Kamara	Parkin	Calderwood	Bamber (2)	Gittens	
19.1.88	<b>TUE CHELSEA 7.30 (Simod)</b>	<b>H</b>	<b>12,317</b>	<b>4-0</b>	Hammond	Hockaday	King	Kamara	Parkin (1)	Calderwood	Bamber	Gittens	
30.1.88	SAT NEWCASTLE (FA Cup)	A	28,599	0-5	Hammond	Hockaday	King	Kamara	Parkin	Calderwood	Bamber	Gittens	
6.2.88	<b>SAT MIDDLESBROUGH</b>	<b>H</b>	<b>9,941</b>	<b>1-1</b>	Digby	Hockaday	King	Kamara	Parkin	Calderwood	Bamber (1)	Gittens	
13.2.88	SAT HUDDERSFIELD T.	A	6,358	3-0	Digby	Hockaday	King	Kamara	Parkin	Calderwood	Bamber (2)	Gittens	
20.2.88	SAT SHREWSBURY T.	A	5,649	1-2	Digby	Hockaday	King†	Kamara	Parkin	Calderwood	Bamber (1)	Gittens	
23.2.88	<b>TUE NORWICH (Simod) 7.45</b>	<b>H</b>	<b>10,491</b>	<b>2-0</b>	Digby	Hockaday	King	O'Regan	Parkin	Calderwood	Bamber	Gittens	
27.2.88	<b>SAT MILLWALL</b>	<b>H</b>	<b>9,570</b>	<b>0-1</b>	Digby	Hockaday	King	Foley	Parkin	Gittens	Bamber	O'Regan†	
8.3.88	TUE LUTON T. (Simod SF)	A	10,027	1-2	Digby	Hockaday	King	Foley	Parkin	Gittens	Bamber	O'Regan†	
12.3.88	SAT OLDHAM ATHLETIC	A	5,203	3-4	Digby	Hockaday	King	McLoughlin	Parkin	White	Gittens	Barnes	
15.3.88	<b>TUE BARNLEY</b>	<b>H</b>	<b>7,558</b>	<b>3-0</b>	Digby	Hockaday	King	O'Regan	Parkin	Henry	Barnes	McLoughlin	
19.3.88	SAT MANCHESTER CITY	A	17,022	1-1	Digby	Hockaday	King	Henry	Parkin	White	Bamber (1)	Foley	
27.3.88	<b>SUN CRYSTAL PALACE</b>	<b>H</b>											
30.3.88	<b>WED BRADFORD CITY 7.45</b>	<b>H</b>											
2.4.88	<b>SAT LEICESTER CITY</b>	<b>H</b>											
4.4.88	<b>MON PLYMOUTH ARGYLE</b>	<b>A</b>											
9.4.88	<b>SAT BLACKBURN ROV.</b>	<b>H</b>			Jimmy Quinn		26 Goals		Leigh Barnard		2 Goals		
12.4.88	TUE HULL CITY (7.45)	A			Dave Bamber		15 Goals		Chris Kamara		2 Goals		
23.4.88	SAT STOKE CITY	A			Steve White		13 Goals		Kieran O'Regan		2 Goals		
25.4.88	MON BLACKBURN ROV. (7.30)	A			Bobby Barnes		8 Goals		Steve Berry		1 Goal (pen.)		
30.4.88	<b>SAT LEEDS UNITED</b>	<b>H</b>			Steve Foley		6 Goals		Colin Calderwood		1 Goal		
2.5.88	MON A.F.C. BOURNEMTH	A			Tim Parkin		3 Goals		Jon Gittens		1 Goal		
7.5.88	<b>SAT ASTON VILLA</b>	<b>H</b>											

### The Hickman (Swindon Ltd).

An award will be made at the end of the season to the Club's highest goalscorer in 1st team matches.

# THE MOONRAKER



## CS • STATISTICS • STATISTICS •

	10	11	12	14
Quinn	Kelly†	Kamara	Barnard	Henry†
Quinn (3)	Bamber	Barnard	Coyne	Henry†
Quinn (1)	Berry	Barnard	Henry	Foley
Quinn	Bamber (1)	Barnard	Foley	Henry†
Quinn (1)	Berry†	Barnard	Coyne†	Foley
Quinn	Foley	Barnard	Henry	Coyne†
Quinn (1)	Foley	Barnard (1)	Henry	White
Quinn	Foley	Barnard	Coyne†	Kelly†
Quinn†	Foley†	Barnard	Kelly†	Henry†
Quinn (1)	Foley	Barnard (1)	White	Kelly†
Quinn (2 + p)	Foley	Barnard	Henry	O'Regan†
Quinn (p)	Foley	Barnard	White†	Gittens†
Quinn (1)	Foley	Barnard	White	Gittens†
Henry	Foley (1)	Barnard	White	Quinn (1)†
Quinn	Foley†	Barnard	White (1)†	Henry†
Quinn	Foley	Barnard	Kelly†	Henry
Quinn (1)	Foley	Barnes	Barnard†	Henry†
Gittens	Barnard†	Barnes	Coyne	Henry†
Quinn (1)	Foley	Barnard	Henry†	Gittens†
Quinn†	Foley (1)	Barnes (1)	O'Regan†	Henry†
Quinn (1)	Foley (1)	Barnard	White†	Kelly
Quinn (1)	Foley	Barnes (1)	O'Regan	White
White†	Gittens (1)†	Barnes	Henry†	Foley†
Quinn†	Foley†	Barnes	O'Regan†	White†
Quinn	O'Regan	Barnes (2)	Henry†	White
Quinn (1)	Foley	White (2)	Henry	Coyne
Quinn (1)	Foley (2)	Barnes (1)	O'Regan	Wade
Quinn (p)†	Foley†	White	Parkin†	Wade†
Quinn	Foley	White†	Parkin	Wade†
Quinn (1)	Foley	Barnes	White	Wade
Quinn (1)	Foley	Parkin	White	Coyne
Quinn (1)	Foley	Barnes	White	Henry
Quinn†	Foley	Barnes	White (2)†	Henry†
Quinn	Foley	Barnes (1)	White†	O'Regan†
Quinn	Foley	White†	O'Regan	Wade†
Quinn	Barnes	O'Regan	White	Henry
Quinn (1)	O'Regan	White (2)	Wade	Henry
Quinn	O'Regan	Foley	White	Henry
Quinn†	White	O'Regan	Foley	Barnes†
Quinn	Barnes	O'Regan (1)	Foley	White
Quinn	Foley	O'Regan	White†	Henry
Quinn	Foley (1)	White	Henry	Barnard
Quinn†	White	Barnes	Henry†	Wade
Quinn	Barnes†	Bodin	White†	Henry
O'Regan	Quinn (1)	Bodin (1)	Wade†	Henry† (1)
Quinn (p)	White (2)	Bodin	Wade	Cressley
O'Regan	Quinn	Bodin†	Barnes†	McLaughlin

† Denotes substitute used and player replaced

### Goal Scoring League

Paul Bodin	1 Goal
Charlie Henry	1 Goal
Dave Hockaday	1 Goal
John Kelly	1 Goal
Phil King	1 Goal
Own goals	2 Goals

Our thanks to **Hickmans (Swindon) Ltd.**

### NEARING A MILESTONE

Following last weeks 1-1 draw at Manchester City we have now scored **3,992** goals since we entered the Football League in 1920.

Our full playing record since we were accepted into the Football League is:

Played	: 2,673
Won	: 1,017
Drew	: 681
Lost	: 975
Goals For	: 3,992
Goals Against	: 3,880

Who will be **A. N. Other** to score goal No. **4,000**?

### OUR SECOND DIVISION RECORD TO DATE

This is our third spell in the Second Division and our record shows that overall we have lost more matches than we have won.

Our complete record, inclusive of last weeks match at Maine Road, is as follows:-

Played	: 327
Won	: 106
Drew	: 89
Lost	: 133
Goals For	: 427
Goals Against	: 472

# THE MOONRAKER



# Money MATTERS WITH DOUG BUSWELL



### FULL COLOUR VIDEOS

of today's match with Crystal Palace and all remaining 1st team games will be available exclusively from the Commercial Department.

1 hour duration.

You can enjoy the elation or agonies in your own homes.

Videos available of Chelsea, Norwich City, Millwall, Barnsley and, in about seven days, today's battle with Crystal Palace.

**V.H.S. £13.99 Beta £14.99**

**p. & p. £1.25**

or they can be collected from The Commercial Department, Swindon Town F.C.

County Ground, Swindon, Wilts. All cheques to be made payable to Swindon Town F.C.

### Videos

of Swindon Town v Gillingham and the 1969 League Cup Final v Arsenal are completely sold out.

On the subject of videos, it is hoped to produce a video of all aspects of Swindon Town F.C., from Boot Room to Board Room, from Treatment Room to Town End and Supporters Club to Stratton Bank.

It's all there.

Rebecca Broxton, who has filmed the Club from all angles, is now editing the film and it should be available soon on general sale. Watch this column for information.

### GRAND NATIONAL DRAW

**2.4.88**

will be held in the Rendezvous Club after our match with Leicester City. Anyone holding tickets for the draw are reminded that to participate they should be in the Commercial Office by noon on 2.4.88.

All winners and persons who draw horses will be notified.

### MASCOTS

**1988-1989,**

**1989-1990**

Due to tremendous demand the position of Match Day Mascot is now full for the above seasons.

**WATCH OUT FOR 'SUPALOOT'**



## WARNING TV SURVEILLANCE

*This ground is equipped with*  
**CLOSED CIRCUIT TELEVISION**

Installed with the help of a grant from the Football Trust. It is there to increase crowd safety and to help the police. Recording facilities enable film and photographs to be taken of disorder, which may subsequently be used in a court of law.

The Football Trust is funded entirely by the pools companies Littlewoods, Vernons and Zettlers from their Spotting-the-Ball competition.

**WATCH OUT FOR 'SUPERLOOT'**

# THE MOONRAKER

## MEET THE TEAMS



### SWINDON TOWN

1. Fraser Digby
2. Dave Hockaday
3. Phil King
4. Kieran O'Regan
5. Tim Parkin
6. Jon Gittens
7. Alan McLoughlin
8. Dave Bamber
9. Jimmy Quinn
10. Steve White
11. Paul Bodin
12. Bobby Barnes
14. Charlie Henry

150 years  
of tradition



Sole official supplier of footwear to the Football Association School of Excellence.

Sole manufacturer and supplier to the Football Association and Football League of the exclusive Delta design official match ball.

Available from leading sports retailers - for further information contact Mitre Sports on 0484 37488

### CRYSTAL PALACE

1. Perry Suckling
2. Kevin O'Doherty
3. David Burke
4. Alan Pardew
5. Tony Finnigan
6. Jim Cannon
7. Neil Redfern
8. Geoff Thomas
9. Phil Barber
10. Ian Wright
11. John Salako
12. Glenn Pennyfather
- 14.

#### Referee: Mr. K. Cooper (Pontypridd)

(Keith is a mobility officer working with blind children. He progressed to the Football League via the South Wales Amateur and Welsh Leagues. Keith is married with two sons and includes among his hobbies athletics and football coaching of children.)

#### Linesman Red Trim: R. J. Horswell

#### Linesman Yellow Trim: W. T. Phillips

#### Reserve Official: P. R. Munday

#### Match Sponsors:

Mr. A. Holland, High Close Soft Fruit, Hungerford

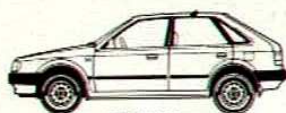
Your 'Mitre' Matchball is sponsored by:

Mr. M. Puffett, Europcar, Swindon

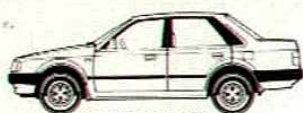
Hill House Hammond 128/9 Commercial Road, Swindon  
Tel: 618158.

The right choice for your insurance.

# Mazda



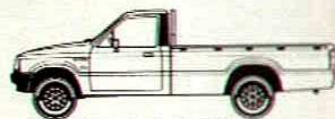
323 5-DOOR



323 4-DOOR SALOON



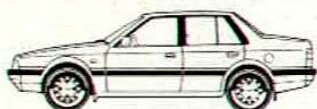
323 1.5 ESTATE



E2000/E2200 (Diesel) PICK UP



626 5-DOOR HATCHBACK



626 4-DOOR SALOON



929 ESTATE



E2000/E2200 (Diesel) PANEL VAN

# SWINDON Mazda

## GROUNDWELL ROAD, SWINDON

### 614277 OR 24951



323 Turbo 4x4 LUX



RX-7